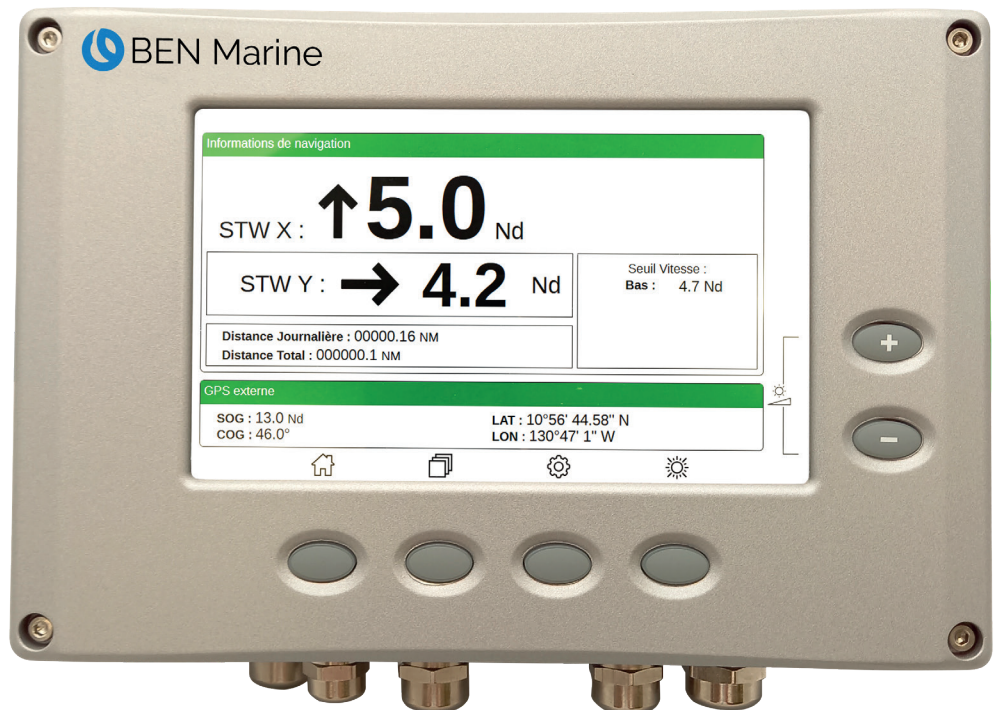


# CLETA electromagnetic speed log

This electromagnetic speed log is the latest member of the BEN Marine navigation range. It combines the quality and reliability of BEN Marine with the latest technology.

The CLETA EM speed log standard package consists of:

- One main cabinet
- One transducer
- One hull-fitting



## Benefits

- User friendly interface on a wide-angle color screen
- Three different display view (standard, analog, or bridge)
- Distant connection to interface thru Ethernet connection
- IEC61162-450 Ship Lightweight Ethernet
- Longitudinal or Longitudinal/lateral Speed thru water
- GPS external input for assisted calibration
- Electromagnetic sensor, no moving parts, no echo sounder perturbations
- Compatible with all 48 and 65 mm BEN Marine sensor

# Specifications

Size	244 x 164 x 93
Weight	4 Kg
Power supply	24Vdc or 115/220v ac 50/60Hz
Outputs	1x Pulse 1/200 mile 1x Pulse programmable 1/100, 1/200, 1/400 mile 1x RS422 NMEA 0183, 4800 or 38400 Bds (1x RS422 NMEA 0183, 4800 or 38400 Bds)* 1x Analog output (0-500uA) for galvanometer. 2x Configurable Speed threshold contact 1x 12v 500mA (galvanometer backlight) 1x output for GA120 totalizer 1x Sensor Inducer current
* Optional, on request	
Inputs	1x RS422 NMEA 0183 for GPS (RMC sentence) (1x RS422 NMEA 0183, 4800 or 38400 Bds)* 1x X speed electrodes 1x Y speed electrodes
Network	Ethernet connection
Display	7" IPS color screen, wide viewing angle
Standards	IMO wheelmark (Med D) approval certificate by DNV-GL



# Main features

- **User Interface**
  - Smart and easy to use
  - Multilingual (English, French, Spanish, other on demand)
  - Multiple view: standard, bridge, analog
  - All settings available from UI
- **GPS**
  - Position, SOG, COG displayed from external input
  - Assisted calibration
- **Speed Limit**
  - Trawling : configurable high and low speed indication
- **Distant Connection**
  - UI available from any Web Browser
- **Electromagnetic sensor**
  - Less sensible to bubbles than Doppler
  - Does not interfere with ultrasonic sounders
  - Not sensitive to salinity or temperature
- **Speed Span**
  - 10Kn to 50Kn.

# User interface

## Distant Connection



## Night Mode



Fig 1. Analog view



Fig 2. Bridge view

For more information: [benmarine@atos.net](mailto:benmarine@atos.net)

Atos is a registered trademark of Atos SE, September 2022. © Copyright 2022, Atos SE. Confidential Information owned by Atos group, to be used by the recipient only. This document, or any part of it, may not be reproduced, copied, circulated and/or distributed nor quoted without prior written approval of Atos.